

Advancing Engaged Research & Education to Transform Poverty into Prosperity

Steve Roussos, PhD, MPH

BLUM CENTER
FOR DEVELOPING ECONOMIES

RESOURCE CENTER FOR
COMMUNITY ENGAGED
SCHOLARSHIP | UC MERCED

*Regional Opportunities for Sustainability
and Resource Conservation
June 30, 2016*

sroussos@ucmerced.edu, 209.489.9913



UC MERCED
BLUM CENTER
FOR DEVELOPING ECONOMIES



POWER OF 10

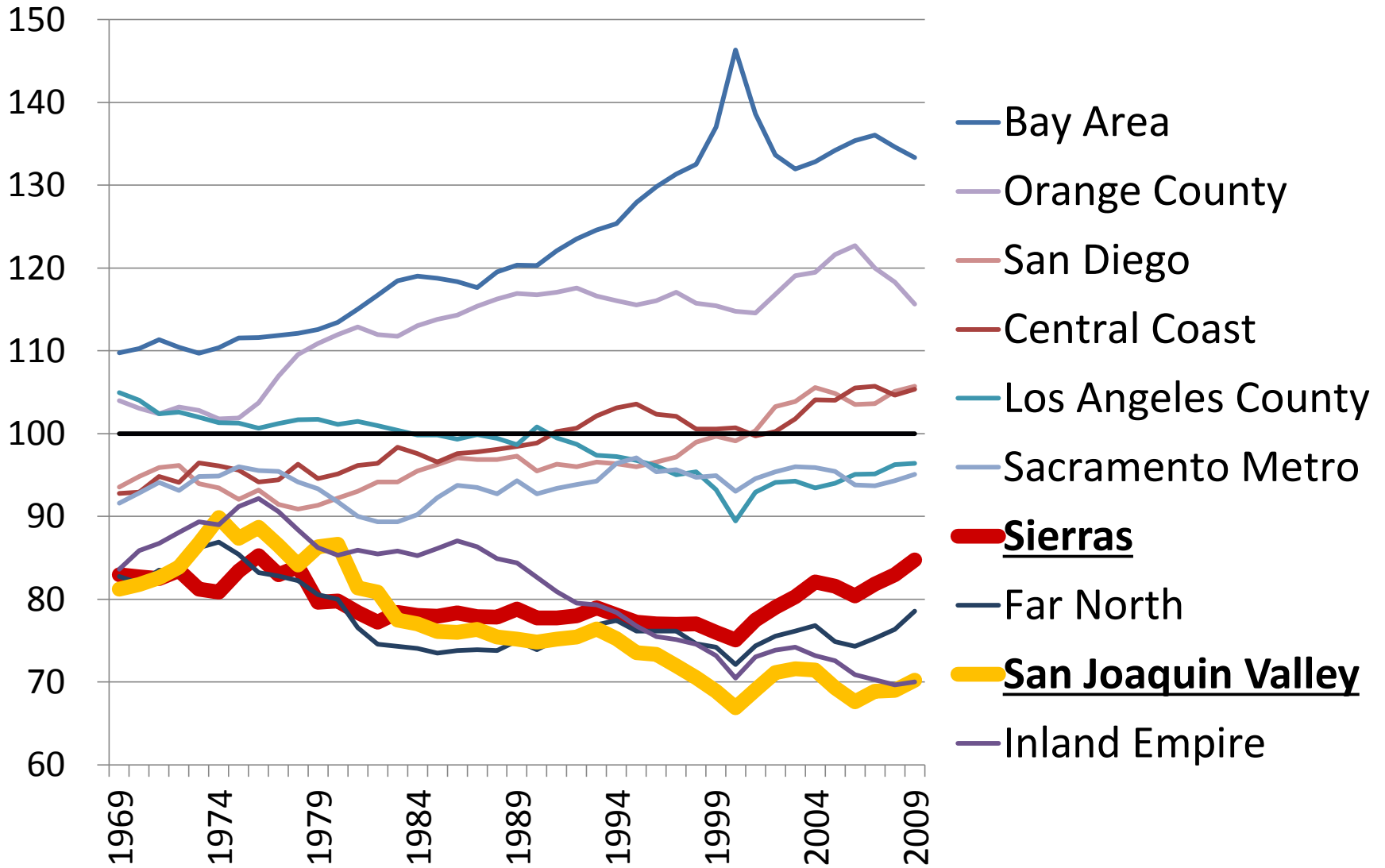
How can the world's largest and most powerful public research university help to eliminate global poverty?

- Scalable and sustainable solutions
- Preparing generations of leaders



Growing Apart: Regional Per Capita Income Relative to State, 1969-2009

(100 = State Per Capita Income)



Source: Hans Johnson, PPIC, based on US Bureau of Economic Analysis data, April 2014.

Connecting Smart Growth and Wealth Equity Concerns in SJV

Jobs closer to home

AND *Closer access to quality child care and
after school care*

Locally sourced food

AND *Access to affordable nutrition
Living wages for farmworking families*

Affordable, higher density housing

AND Proximity to quality health, education,
safe parks, and other human services

UC MERCED

ReCCES

RESOURCE CENTER FOR
Community Engaged Scholarship



“A 21st century education must prepare all of our students to be creative, innovative solution-finders who can deal with problems they have never seen before while working with people they have never met before, many of whom are very different in values, culture, experience and expertise”

- Judith A. Ramaley

How can the Blum Center help you?

SWOT Analyses: Prioritizing campus and community resources to channel and focus research support

Roundtable Discussions: Joining community and academic minds for innovations and solutions

Community-Engaged Research: training and projects for faculty and students addressing community concerns

